

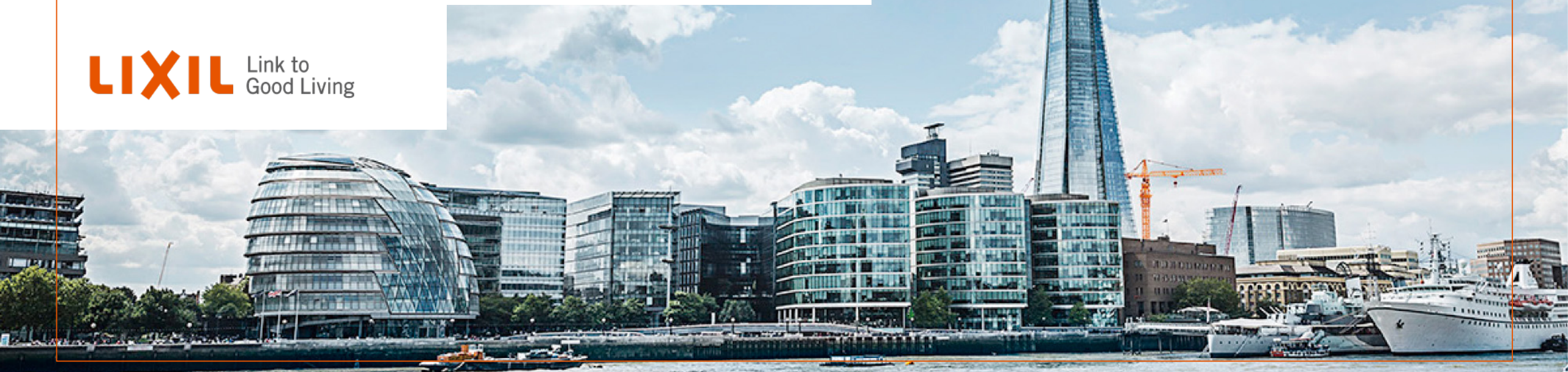
## › IoT and data in Living Spaces

**Kanji Mihara**

Director, Head of System Technology Lab, Technology Research Div.  
LIXIL Corporation

March 9, 2018

**LIXIL** Link to  
Good Living



# LIXIL Profile

5 major companies merged in 2011



LIVING × LIFE

LIXIL

Link to Good Living

Global brands:

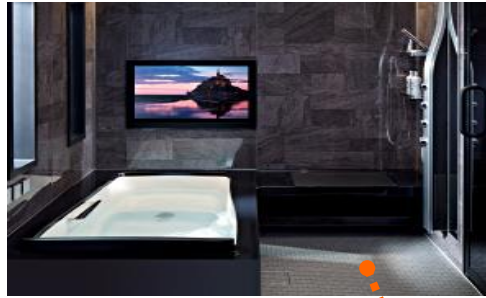




# Product lineup (Residential)

Providing almost all building materials and housing equipment

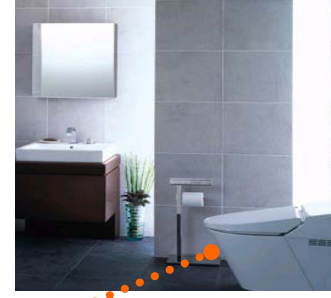
Bathroom



Vanity



sanitary chinaware



Roof



Sash & Shutter



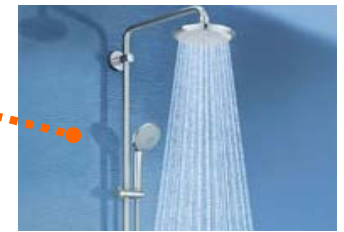
System Kitchen



Entrance door



Shower head and faucet



Car port



Tile and wall



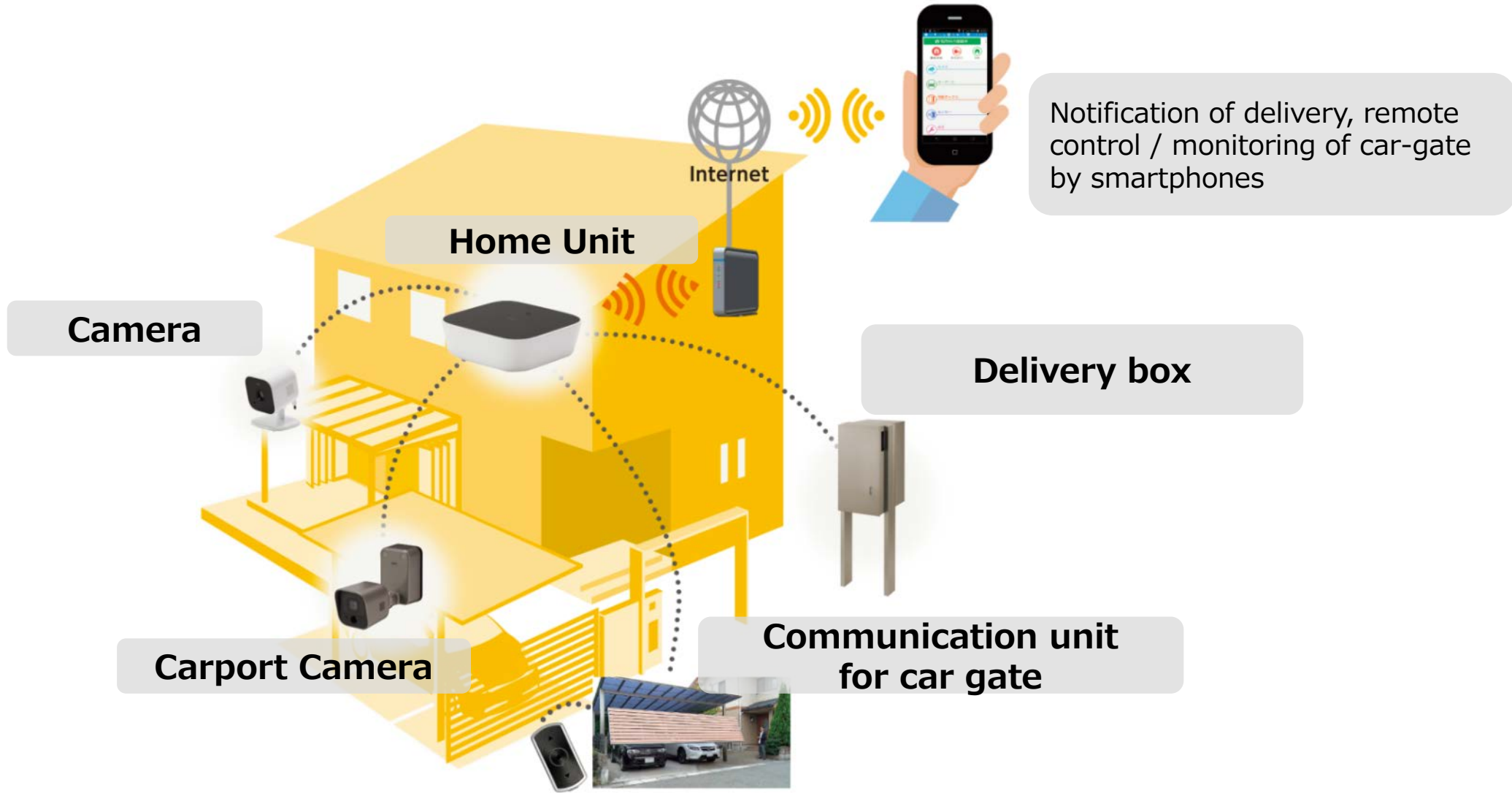
Interior



Exterior



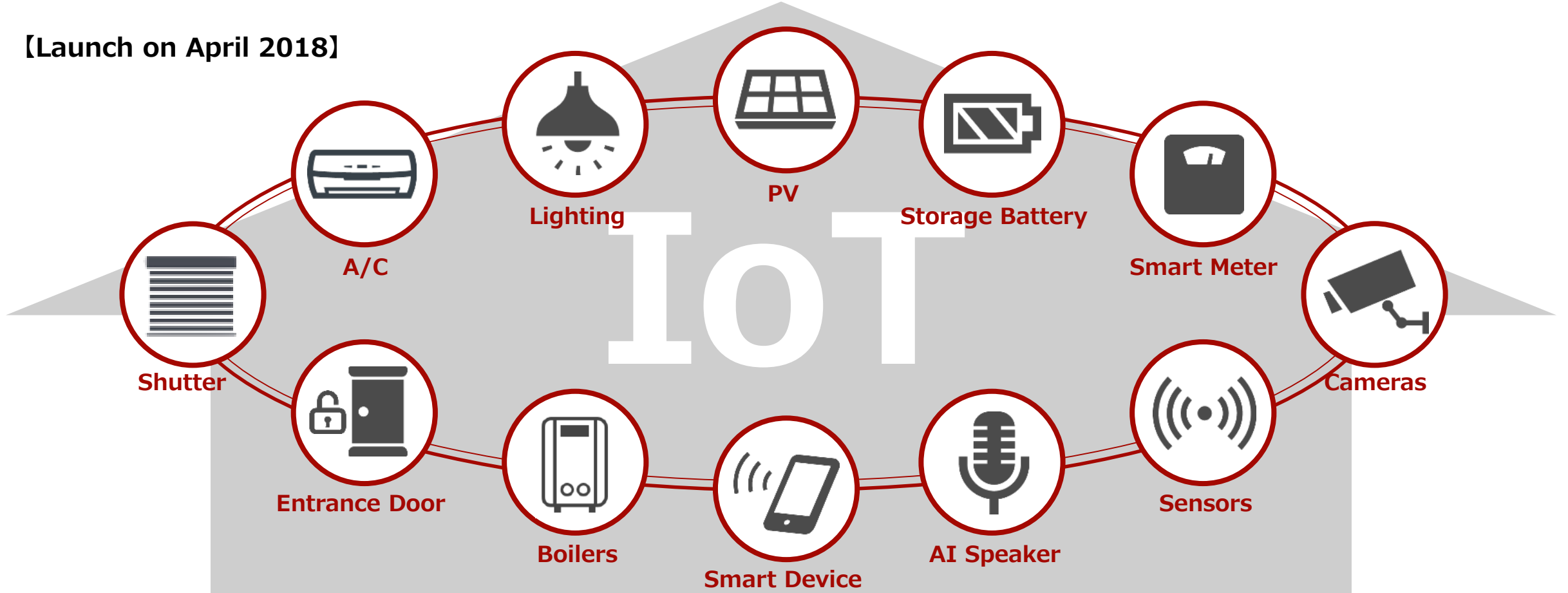
# IoT Product 1 : "Smart Exterior"



IoT Product 2:

# IoT Home Service

[Launch on April 2018]



Linking living equipment and sensors

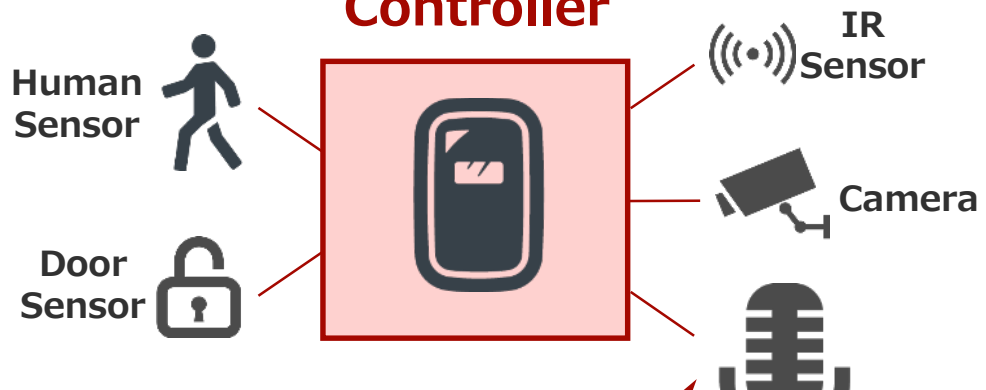
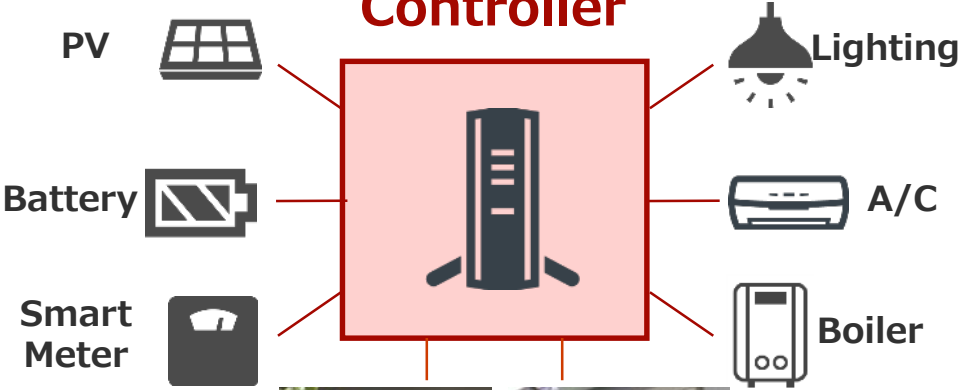
# Provide convenience and security

# System Configuration



## Home Controller

## LINK Controller



One APP to control

LIXIL equipment



# HEMS

# SECURITY



LIXIL's Research facility of "Future of living space"

# U<sup>2</sup>-Home II

Ubiquitous x Universal



Data from Living + Know How of Living



Level1 Notification

Level2 Control

Level3 Deep Analysis

➤ Approx. 250 sensors in whole house (20yrs old)

# Examples of sensor / data utilization



Visualizing energy / water usage



Notification of accident / illness



Closing shutter/windows by detecting stranger

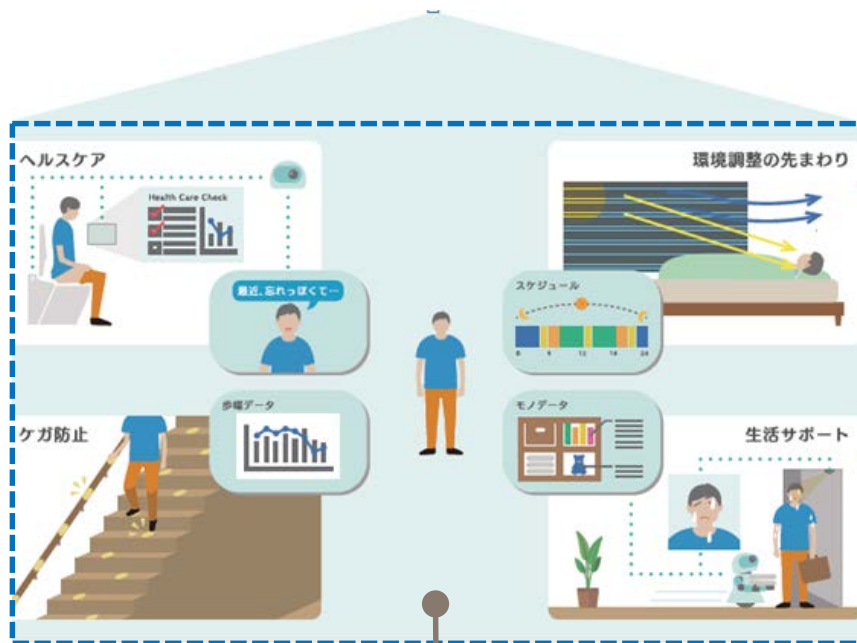


Controlling window, lighting and A/C for comfort



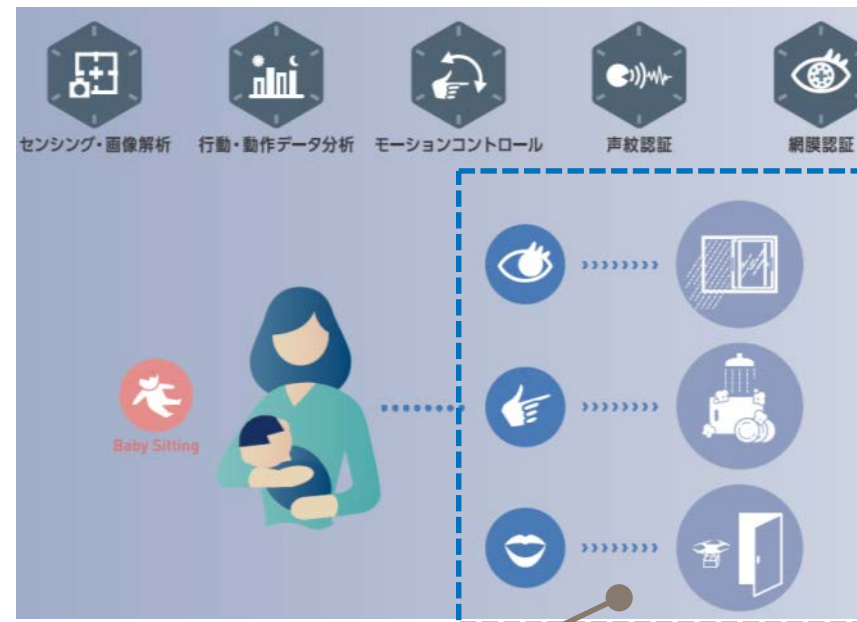
# Vision for future smart home

## Humanized house, which works according to human will



**Warn and react, by detecting human's behavior change / intention**

- Data acquisition from daily life
- Data analysis of behavior, intention, and health
- Prediction and accident prevention



**Control without any interaction, or using intuitive interface**

